

U.S. National Ice Center

NOAA Satellite Operations Facility
4231 Suitland Road
Suitland, MD 20746

PRESS RELEASE

JULY 17 2017

FOR IMMEDIATE RELEASE

Contact: Evelyn V. Bowens

NIC.PAO@noaa.gov

301-817-3975

July 17, 2017 SUITLAND, MD —The U.S National Ice Center (USNIC) confirmed that iceberg A-68 has broken into two smaller icebergs. A-68 calved off of the Larsen-C Ice Shelf on July 13th and has remained within a few miles of the ice shelf on the east side of the Antarctic Peninsula. The larger iceberg, A-68A, measures 82 nautical miles on its longest axis, 25 nautical miles on its widest axis and is located at 67°56' South and 60°55' West. The smaller iceberg, A-68B, measures 6.5 nautical miles by 3 nautical miles and is located at 67°15' South and 60°49' West.

A-68A and A-68B were confirmed by USNIC Ice Analysts using longwave infrared imagery (shown below) from the Visible Infrared Imaging Radiometer Suite (VIIRS) aboard the NOAA/NASA Suomi National Polar-orbiting Partnership (NPP) satellite. These icebergs are expected to drift east-northeast along the Antarctic Peninsula in the Weddell Gyre over the next several months. Additional fracturing is likely before smaller bergs may drift far enough north to enter the Antarctic Circumpolar Current.

Iceberg names are derived from the Antarctic quadrant in which they were originally sighted. The quadrants are divided counter-clockwise in the following manner:

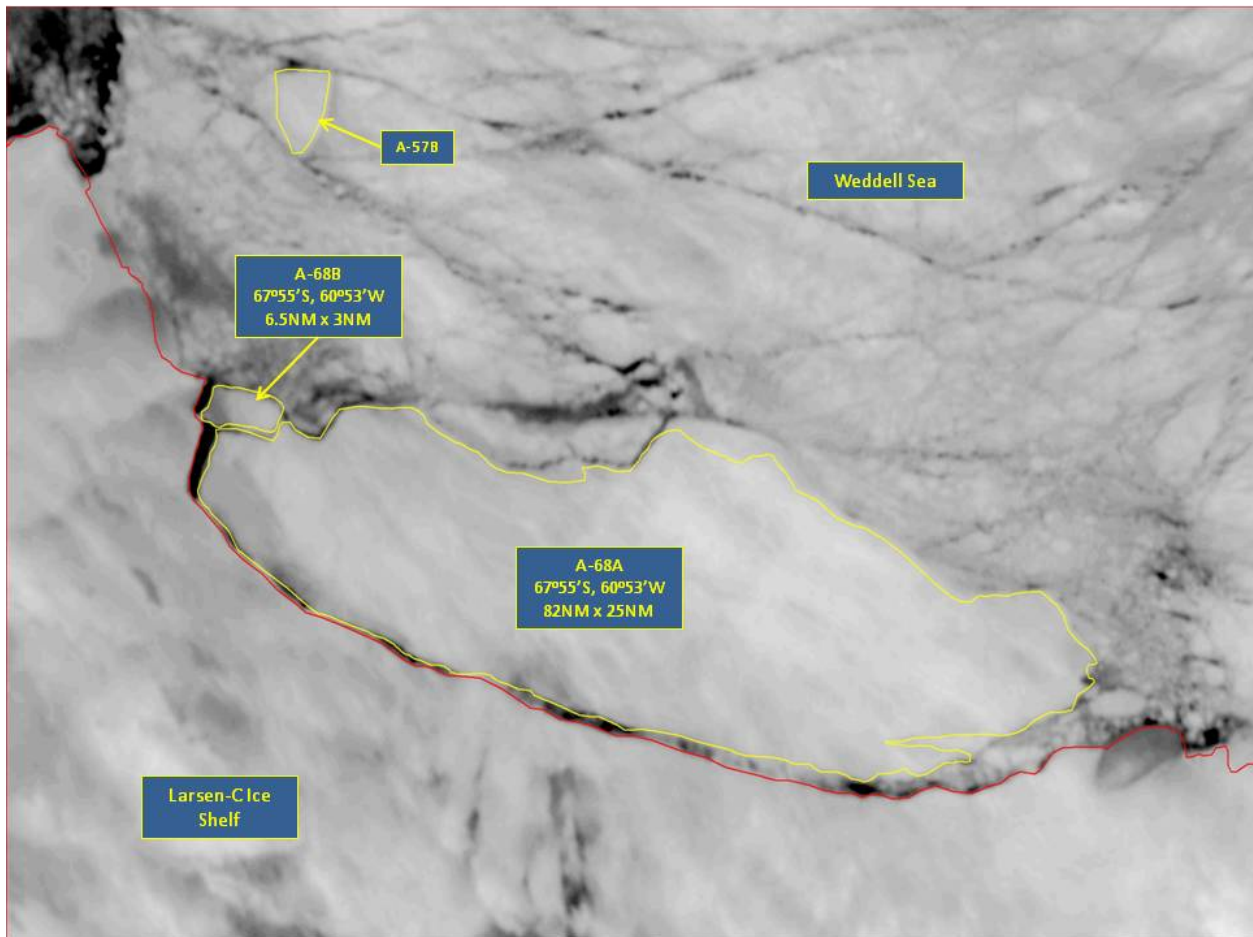
A = 0-90W (Bellingshausen/Weddell Sea)

B = 90W-180 (Amundsen/Eastern Ross Sea)

C = 180-90E (Western Ross Sea/Wilkesland)

D = 90E-0 (Amery/Eastern Weddell Sea)

When first sighted, an iceberg's point of origin is documented by USNIC. The letter of the quadrant, along with a sequential number, is assigned to the iceberg. For example, C-19 is sequentially the 19th iceberg tracked by USNIC in Antarctica between 180-90E (Quadrant C). Icebergs with letter suffixes have calved from already named icebergs, where the letters are added in sequential order. For example, if C-19 splits into two icebergs they will be named C-19A and C-19B and so on. Iceberg positions are analyzed weekly and are available on the USNIC webpage at: <https://usicecenter.gov/Products/AntarcIcebergs>.



VIIRS IR image of A68A and A68B dated July 17th, 2017

For more information, please contact:

U.S. National Ice Center

Command Duty Officer

E-mail: nic.cdo@noaa.gov

Voice: (301) 943-6977

Visit us on Facebook at: <https://www.facebook.com/usnatice/>



The U.S. National Ice Center is a multi-agency center operated by the Navy, NOAA, and Coast Guard and provides global to tactical scale ice and snow products, ice forecasting, and related environmental intelligence services for the United States government.